

This section contains a statistical profile of the state of health of the resident population of Tees.

Information is shown for each Primary Care Trust.

- 1. Population structure and changes**  
Population structure & change
- 2. Opportunities**  
Poverty & environment
- 3. Vulnerable groups**  
Children, older people & homeless people
- 4. Choices**  
Alcohol and smoking
- 5. Inequalities in risks to health**  
Differences in underlying factors
- 6. Inequalities in outcomes**  
Population mortality

**Data sources & availability**

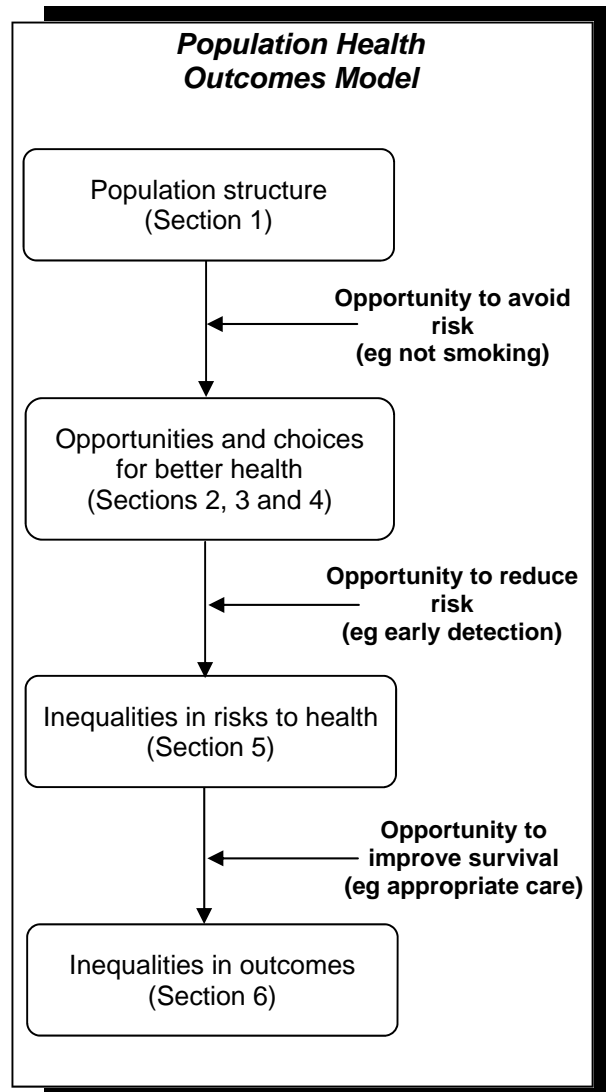
Most of the data has been obtained from nationally or locally available data sets. The main source is the Compendium of Health & Clinical Indicators published annually by the Department Health. The source for each item is identified beside the appropriate table or figure.

**Inclusion of profile items**

The items in the profile are not exhaustive but are those that constitute the minimum required to convey a fairly comprehensive impression of health in the population. The criteria for inclusion of material took into account such issues as availability of data for particular time periods; particular geographical areas; aspects of risk to health; and diseases that are preventable (such as cancer and heart disease).

**Organisation of the profile**

There is no 'best' way to present this material to meet the needs of all users. In this case, the items have been arranged in a broadly chronological – or 'life-course' – sequence from birth to death. This has the advantage of following the organisational framework of the 'Population Health Outcomes Model' proposed by the Department of Health as a method for structuring the vast array of information into a logical whole.

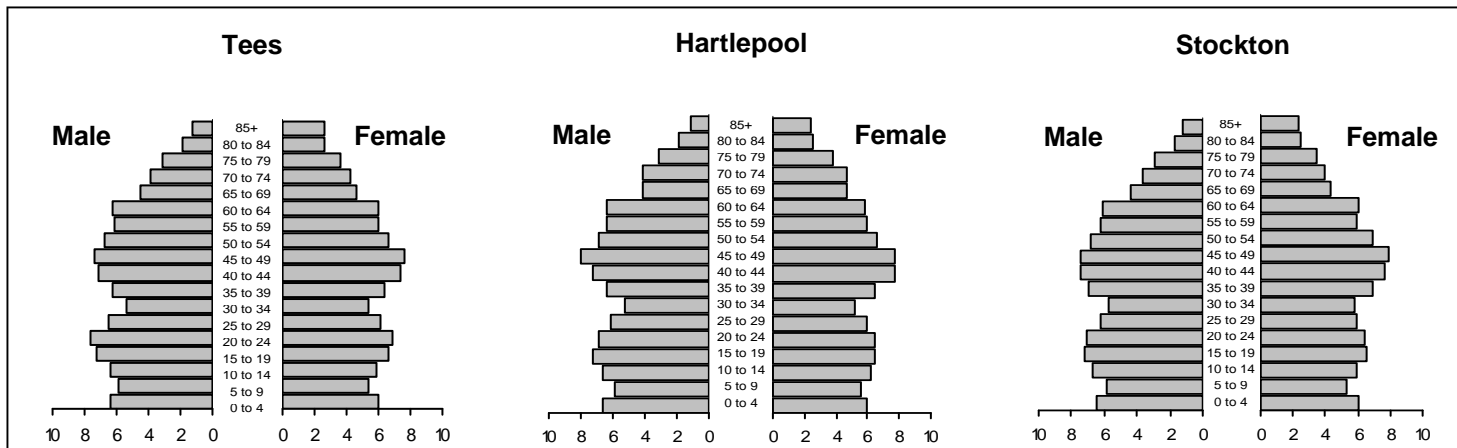


**James O'Donnell**  
*Public Health Intelligence Specialist*

**Leon Green**  
*Public Health Intelligence Specialist*

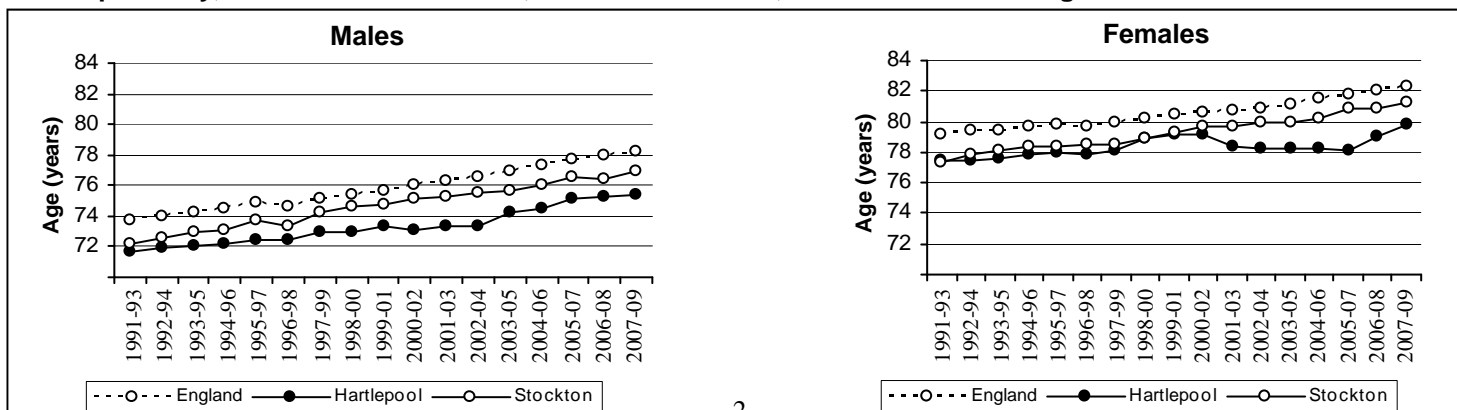
# Population structure and changes

## Population structure, 2009



Age group	Males						Females						Persons					
	Hartlepool		Stockton		Tees	Eng & Wales	Hartlepool		Stockton		Tees	Eng & Wales	Hartlepool		Stockton		Tees	Eng & Wales
	No.	%	No.	%			No.	%	No.	%			No.	%	No.	%		
0 - 4	2,900	6.6	6,000	6.4	6.4	6.4	2,800	6.0	5,900	6.1	6.0	5.9	5,700	6.3	11,900	6.2	6.2	6.1
5 - 9	2,600	5.9	5,500	5.9	5.9	5.7	2,600	5.6	5,200	5.3	5.3	5.3	5,200	5.7	10,700	5.6	5.6	5.5
10-14	2,900	6.6	6,300	6.7	6.4	6.1	2,900	6.2	5,800	5.9	5.9	5.6	5,800	6.4	12,100	6.3	6.2	5.8
15-19	3,200	7.3	6,700	7.2	7.2	6.7	3,000	6.4	6,400	6.6	6.6	6.1	6,200	6.8	13,100	6.9	6.9	6.4
20-24	3,000	6.8	6,600	7.1	7.7	7.1	3,000	6.4	6,200	6.4	6.9	6.6	6,000	6.6	12,800	6.7	7.3	6.9
25-29	2,700	6.1	5,800	6.2	6.5	7.0	2,800	6.0	5,800	5.9	6.1	6.5	5,500	6.1	11,600	6.1	6.3	6.7
30-34	2,300	5.2	5,400	5.8	5.4	6.4	2,400	5.1	5,700	5.8	5.3	6.1	4,700	5.2	11,100	5.8	5.4	6.2
35-39	2,800	6.4	6,500	6.9	6.3	7.1	3,000	6.4	6,700	6.9	6.4	7.0	5,800	6.4	13,200	6.9	6.4	7.0
40-44	3,200	7.3	7,000	7.5	7.2	7.7	3,600	7.7	7,500	7.7	7.4	7.5	6,800	7.5	14,500	7.6	7.3	7.6
45-49	3,500	8.0	7,000	7.5	7.4	7.2	3,600	7.7	7,700	7.9	7.6	7.2	7,100	7.8	14,700	7.7	7.5	7.2
50-54	3,000	6.8	6,400	6.8	6.7	6.3	3,100	6.6	6,700	6.9	6.7	6.2	6,100	6.7	13,100	6.9	6.7	6.2
55-59	2,800	6.4	5,800	6.2	6.1	5.8	2,800	6.0	5,800	5.9	6.0	5.8	5,600	6.2	11,600	6.1	6.1	5.8
60-64	2,800	6.4	5,700	6.1	6.2	6.0	2,700	5.8	5,900	6.1	6.0	6.1	5,500	6.1	11,600	6.1	6.1	6.0
65-69	1,800	4.1	4,100	4.4	4.5	4.5	2,200	4.7	4,200	4.3	4.6	4.7	4,000	4.4	8,300	4.3	4.5	4.6
70-74	1,800	4.1	3,400	3.6	3.9	3.8	2,200	4.7	3,900	4.0	4.3	4.1	4,000	4.4	7,300	3.8	4.1	3.9
75-79	1,400	3.2	2,700	2.9	3.1	2.9	1,800	3.8	3,400	3.5	3.7	3.5	3,200	3.5	6,100	3.2	3.4	3.2
80-84	800	1.8	1,600	1.7	1.9	2.0	1,200	2.6	2,400	2.5	2.7	2.8	2,000	2.2	4,000	2.1	2.3	2.4
85+	500	1.1	1,100	1.2	1.2	1.5	1,100	2.4	2,300	2.4	2.6	3.0	1,600	1.8	3,400	1.8	1.9	2.3
ALL	44,000	100.0	93,600	100.0	100.0	100.0	46,800	100.0	97,500	100.0	100.0	100.0	90,800	100.0	191,100	100.0	100.0	100.0

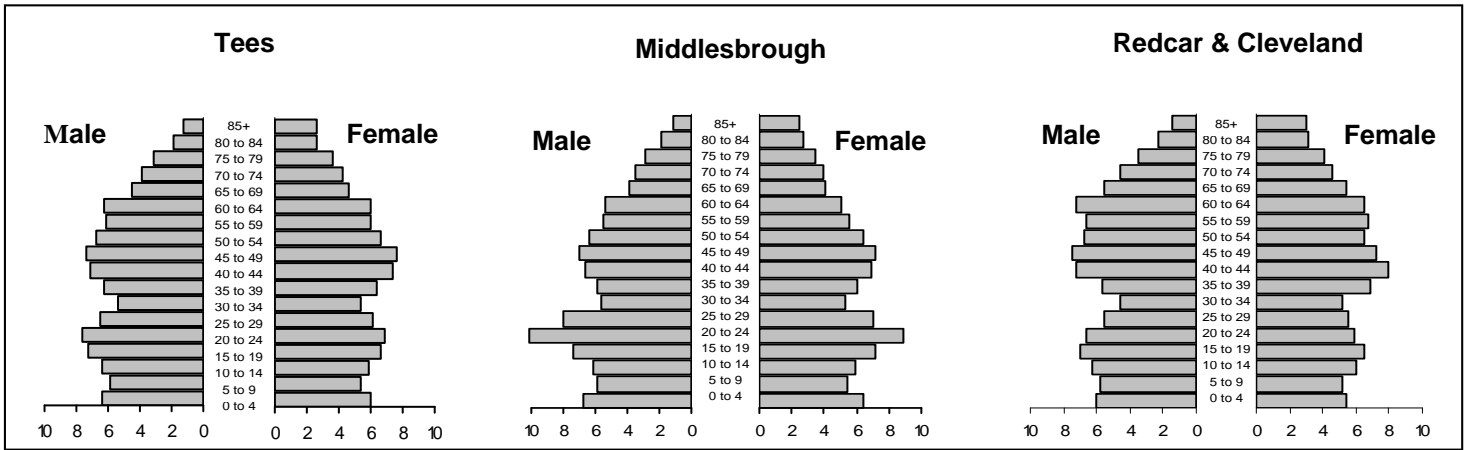
## Life expectancy, 1991-1993 to 2007-2009, males and females, Tees districts and England



Source: National Statistics: The Information Centre for health and social care

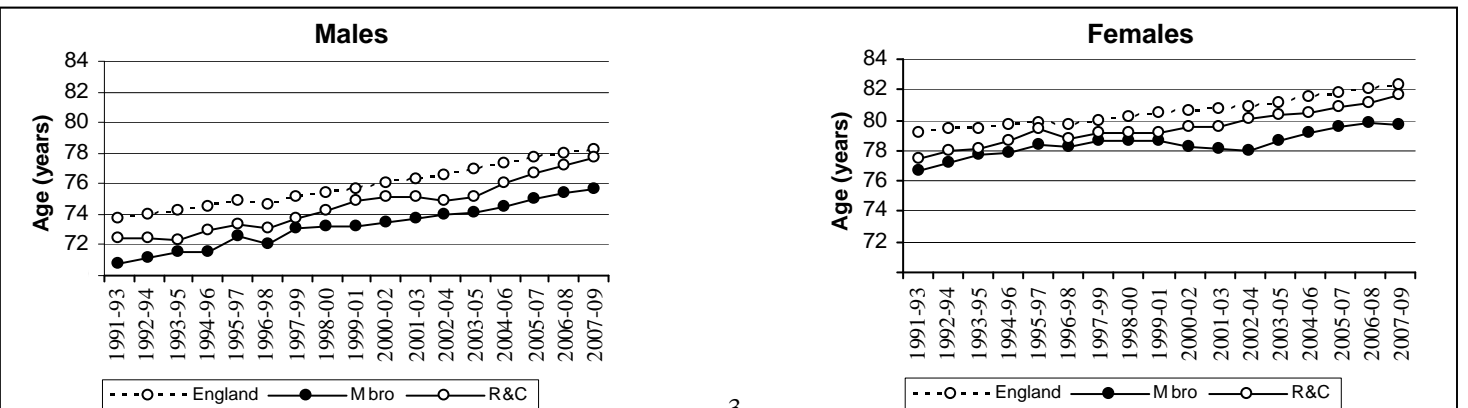
# Population structure and changes

## Population structure, 2009



Age group	Males						Females						Persons					
	Middlesbrough		Redcar & Cleveland		Tees	Eng & Wales	Middlesbrough		Redcar & Cleveland		Tees	Eng & Wales	Middlesbrough		Redcar & Cleveland		Tees	Eng & Wales
	No.	%	No.	%			No.	%	No.	%			No.	%	No.	%		
0 - 4	4,700	6.8	4,000	6.0	6.4	6.4	4,600	6.5	3,800	5.4	6.0	5.9	9,300	6.6	7,800	5.7	6.2	6.1
5 - 9	4,100	5.9	3,900	5.8	5.9	5.7	3,900	5.5	3,600	5.1	5.3	5.3	8,000	5.7	7,500	5.4	5.6	5.5
10-14	4,200	6.1	4,200	6.3	6.4	6.1	4,200	5.9	4,000	5.6	5.9	5.6	8,400	6.0	8,200	6.0	6.2	5.8
15-19	5,100	7.4	4,700	7.0	7.2	6.7	5,100	7.2	4,400	6.2	6.6	6.1	10,200	7.3	9,100	6.6	6.9	6.4
20-24	7,000	10.1	4,400	6.6	7.7	7.1	6,300	8.8	4,200	5.9	6.9	6.6	13,300	9.5	8,600	6.2	7.3	6.9
25-29	5,500	8.0	3,700	5.5	6.5	7.0	5,000	7.0	3,900	5.5	6.1	6.5	10,500	7.5	7,600	5.5	6.3	6.7
30-34	3,900	5.6	3,100	4.6	5.4	6.4	3,800	5.3	3,400	4.8	5.3	6.1	7,700	5.5	6,500	4.7	5.4	6.2
35-39	4,100	5.9	3,800	5.7	6.3	7.1	4,300	6.0	4,400	6.2	6.4	7.0	8,400	6.0	8,200	6.0	6.4	7.0
40-44	4,600	6.7	4,800	7.2	7.2	7.7	4,900	6.9	5,300	7.5	7.4	7.5	9,500	6.8	10,100	7.3	7.3	7.6
45-49	4,800	6.9	5,000	7.5	7.4	7.2	5,100	7.2	5,300	7.5	7.6	7.2	9,900	7.1	10,300	7.5	7.5	7.2
50-54	4,400	6.4	4,500	6.7	6.7	6.3	4,600	6.5	4,700	6.6	6.7	6.2	9,000	6.4	9,200	6.7	6.7	6.2
55-59	3,800	5.5	4,400	6.6	6.1	5.8	4,000	5.6	4,600	6.5	6.0	5.8	7,800	5.6	9,000	6.5	6.1	5.8
60-64	3,700	5.4	4,800	7.2	6.2	6.0	3,600	5.0	4,900	6.9	6.0	6.1	7,300	5.2	9,700	7.0	6.1	6.0
65-69	2,700	3.9	3,700	5.5	4.5	4.5	2,900	4.1	3,800	5.4	4.6	4.7	5,600	4.0	7,500	5.4	4.5	4.6
70-74	2,400	3.5	3,100	4.6	3.9	3.8	2,800	3.9	3,400	4.8	4.3	4.1	5,200	3.7	6,500	4.7	4.1	3.9
75-79	2,000	2.9	2,300	3.4	3.1	2.9	2,500	3.5	2,800	4.0	3.7	3.5	4,500	3.2	5,100	3.7	3.4	3.2
80-84	1,300	1.9	1,500	2.2	1.9	2.0	1,900	2.7	2,100	3.0	2.7	2.8	3,200	2.3	3,600	2.6	2.3	2.4
85+	800	1.2	1,000	1.5	1.2	1.5	1,800	2.5	2,200	3.1	2.6	3.0	2,600	1.9	3,200	2.3	1.9	2.3
ALL	69,100	100.0	66,900	100.0	100.0	100.0	71,300	100.0	70,800	100.0	100.0	100.0	140,400	100.0	137,700	100.0	100.0	100.0

## Life expectancy, 1991-1993 to 2007-2009, males and females, Tees districts and England



Source: National Statistics: The Information Centre for health and social care

# Population structure and changes

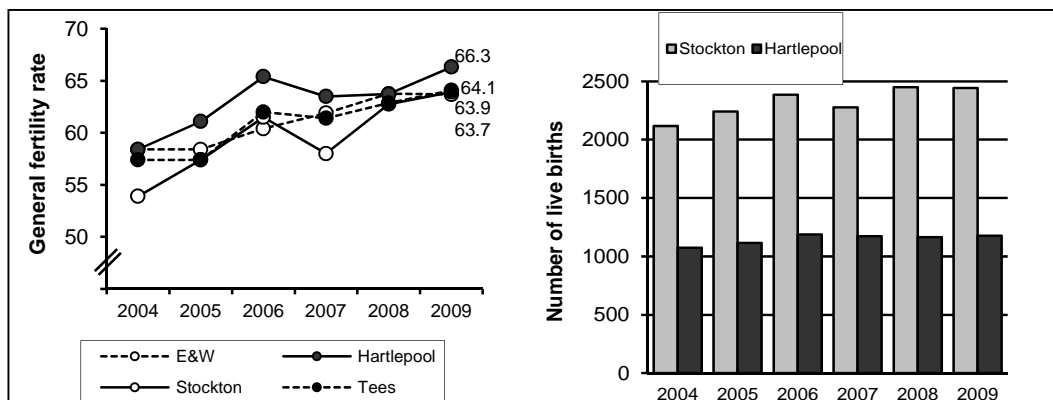
## Summary statistics for births, Hartlepool and Stockton, 2004-2009

	2004			2005			2006			2007			2008			2009		
	Tees	Hpl	Stock	Tees	Hpl	Stock	Tees	Hpl	Stock	Tees	Hpl	Stock	Tees	Hpl	Stock	Tees	Hpl	Stock
Number of Live Births	6,548	1,073	2,117	6,850	1,116	2,241	6,979	1,188	2,385	6,959	1,173	2,276	7,090	1,164	2,449	7,105	1,177	2,443
General Fertility Rate per 1,000	57.4	58.4	53.9	60.5	61.1	57.4	62.0	65.4	61.5	61.4	63.5	58.0	62.9	63.7	62.8	64.1	66.3	63.9
Total Period Fertility Rate	1.9	1.9	1.7	2.0	2.0	1.9	2.0	2.2	2.0	2.0	2.1	1.9	2.0	2.0	2.0	2.0	2.1	2.0
Percentage all births under 2500 grams	8.6	7.8	7.6	8.8	8.7	7.7	9.4	9.4	8.4	8.3	8.0	7.9	8.4	7.8	8.1	7.5	7.1	7.2
Number of Stillbirths	37	7	12	43	6	10	39	7	14	34	6	15	37	8	13	44	9	17
Stillbirth Rate (per 1,000 live & still births)	5.9	6.5*	5.6*	6.2	5.3*	4.4*	5.6	5.9*	5.8*	4.7	5.1*	6.5*	5.3	6.8*	5.3*	6.2	7.6*	6.9*

\* denotes a rate calculated from less than 20 events  
 Note: Italics indicate that the rate is the average of the 4 Tees districts

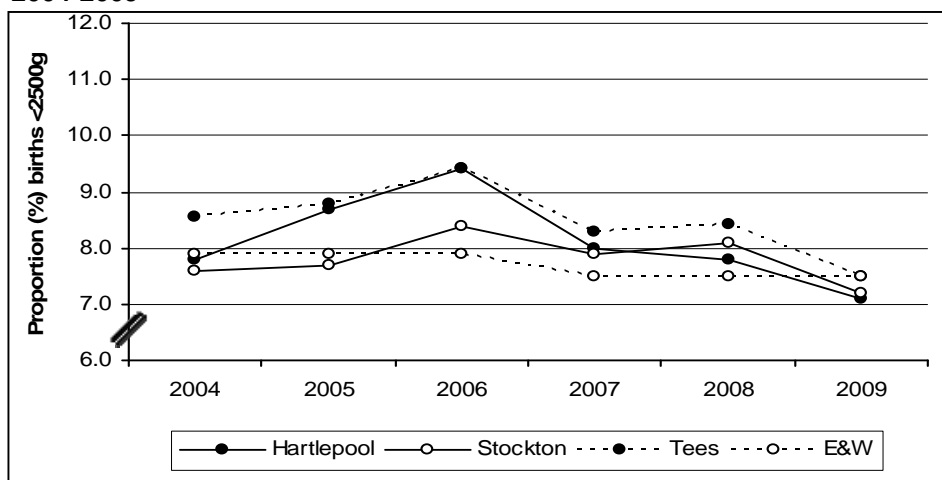
Source: Office for National Statistics (ONS) VS1

## General fertility rates and numbers of live births, Hartlepool and Stockton, 2004-2009



Source: Office for National Statistics (ONS) VS1

## Proportion of births under 2,500 grams, Tees, Hartlepool and Stockton, 2004-2009



Source: Office for National Statistics (ONS) VS1

- In 2009, the number of births in Stockton and Hartlepool remained at the 2008 level.
- The 2009 Stockton fertility rates remain very close to that of England and Wales. Hartlepool's fertility rate is now greater than England and Wales.
- The rates of low birthweight births fell in 2009 in Hartlepool and Stockton and are now similar to the national average, which has remained at the 2008 level

# Population structure and changes

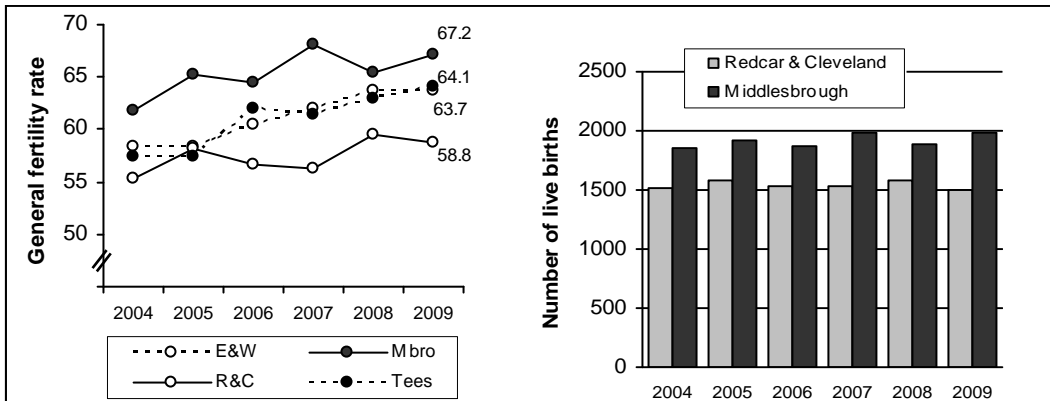
## Summary statistics for births, Middlesbrough and Redcar & Cleveland, 2004-2009

	2004			2005			2006			2007			2008			2009		
	Tees	M bro	R&C	Tees	M bro	R&C	Tees	M bro	R&C	Tees	M bro	R&C	Tees	M bro	R&C	Tees	M bro	R&C
Number of Live Births	6,548	1,849	1,509	6,850	1,916	1,577	6,979	1,878	1,528	6,959	1,983	1,527	7,090	1,891	1,586	7,105	1,981	1,504
General Fertility Rate per 1,000	57.4	61.8	55.3	60.5	65.2	58.1	62.0	64.4	56.6	61.4	68.0	56.2	62.9	65.4	59.6	64.1	67.2	58.8
Total Period Fertility Rate	1.9	2.0	1.8	2.0	2.1	2.0	2.0	2.0	1.9	2.0	2.1	1.9	2.0	2.0	1.9	2.0	2.0	1.9
Percentage all births under 2500 grams	8.6	9.2	9.7	8.8	11.2	7.5	9.4	10.1	9.8	8.3	9.3	8.0	8.4	9.5	8.0	7.5	8.2	7.4
Number of Stillbirths	37	8	10	43	17	10	39	8	10	34	8	5	37	11	5	44	10	8
Stillbirth Rate (per 1,000 live & still births)	5.9	4.3*	6.6*	6.2	8.8*	6.3*	5.6	4.2*	6.5*	4.7	4.0*	3.3*	5.3	5.8*	3.1*	6.2	5*	5.3*

\* denotes a rate calculated from less than 20 events  
 Note: Italics indicate that the rate is the average of the 4 Tees districts

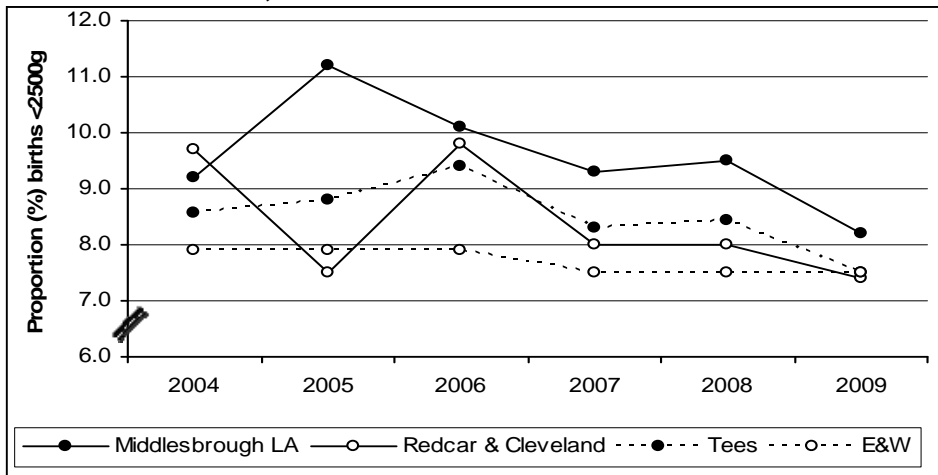
Source: Office for National Statistics (ONS) VS1

## General fertility rates and numbers of live births, Middlesbrough and Redcar & Cleveland, 2004-2009



Source: Office for National Statistics (ONS) VS1

## Proportion of births under 2,500 grams, Tees, Middlesbrough and Redcar & Cleveland, 2004-2009

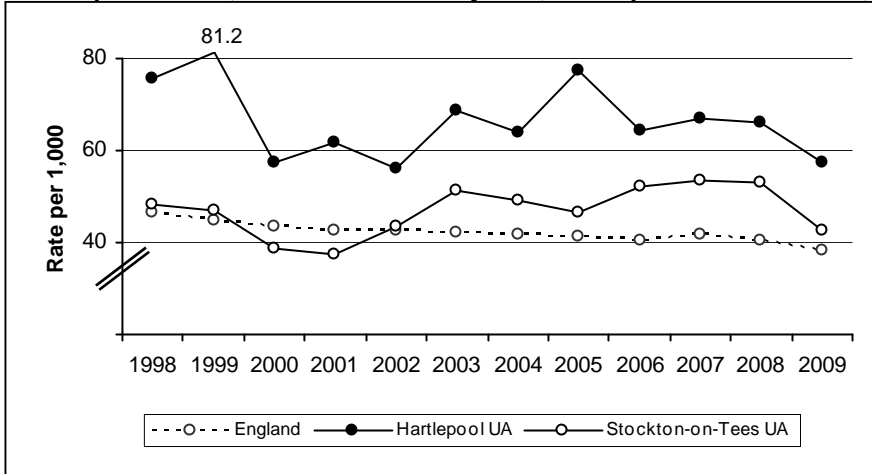


Source: Office for National Statistics (ONS) VS1

- 2009 saw a slight increase in births in Middlesbrough. Redcar & Cleveland saw a slight decrease in births.
- Redcar & Cleveland has the lowest general fertility rate on Teesside (58.8) and Middlesbrough the highest (67.2).
- The rate of low birthweight births fell in 2009 in Middlesbrough and Redcar & Cleveland and are now closer (R&C is similar) to the national average, which has remained at the 2008 level

# Population structure and changes

## Conception rates, females under 18 years, Hartlepool and Stockton, 1998-2009

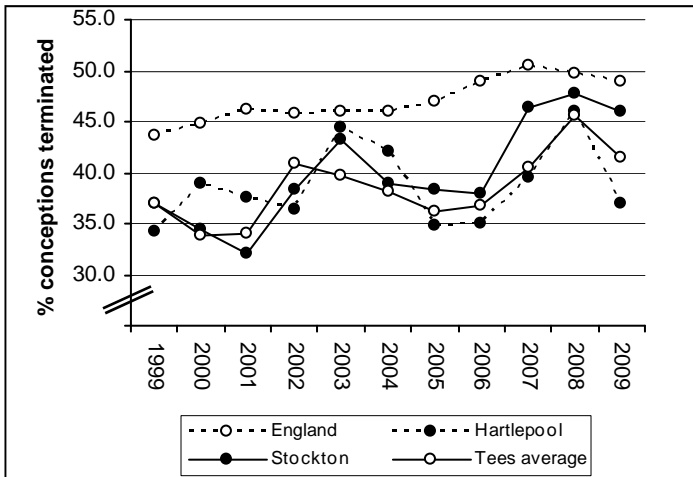


Source: LAD1, Office for National Statistics and Teenage Pregnancy Unit (Version: 11.03.11)

Year	Hartlepool		England
	Number	Rate	Rate
1998	134	75.6	46.6
1999	146	81.2	44.8
2000	108	57.4	43.6
2001	120	61.8	42.5
2002	110	55.9	42.6
2003	134	68.7	42.1
2004	126	64.1	41.6
2005	149	78.0	41.3
2006	126	64.5	40.6
2007	129	66.9	41.8
2008	126	66.1	40.5
2009	106	57.3	38.2

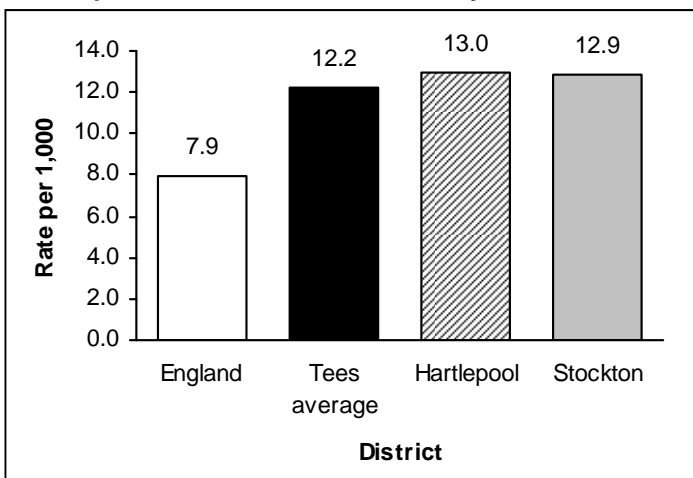
Year	Stockton-on-Tees		England
	Number	Rate	Rate
1998	181	48.3	46.6
1999	176	47.0	44.8
2000	151	38.5	43.6
2001	150	37.2	42.5
2002	172	43.3	42.6
2003	197	51.3	42.1
2004	185	49.0	41.6
2005	176	46.4	41.3
2006	199	52.2	40.6
2007	209	53.6	41.8
2008	209	53.2	40.5
2009	164	42.6	38.2

## Proportion of <18 conceptions leading to termination, 1999-2009



Source: LAD1, Office for National Statistics and Teenage Pregnancy Unit (Version: 11.03.11)

## Conception rates, females under 16 years, 2006-2008

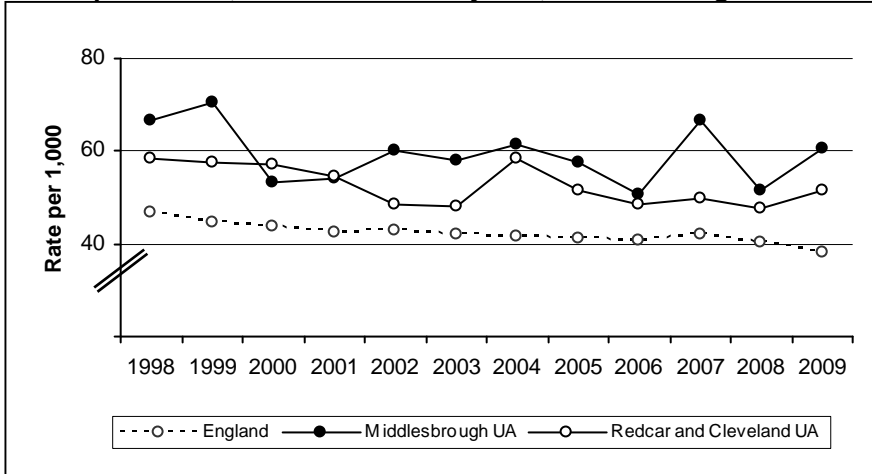


Source: LAD1, Office for National Statistics and Teenage Pregnancy Unit (Version: 11.03.11)

- Under 18 conception rates for both Stockton and Hartlepool are higher than the national average.
- In 2009, Stockton and Hartlepool rates fell substantially from the 2008 level for under 18 conceptions.
- Termination rates of under 18 conceptions reduced drastically in 2009 in both Stockton and Hartlepool.
- Stockton under 16 conception rate has risen in 2006-08
- Hartlepool under 16 conception rate has remained at the 2005-07 level.
- Stockton and Hartlepool rates are higher than the national average, which have remained at the 2005-07 level for under 16 conception rates. Locally, Hartlepool no longer has the highest rate in Tees.

# Population structure and changes

## Conception rates, females under 18 years, Middlesbrough and Redcar & Cleveland, 1998-2009

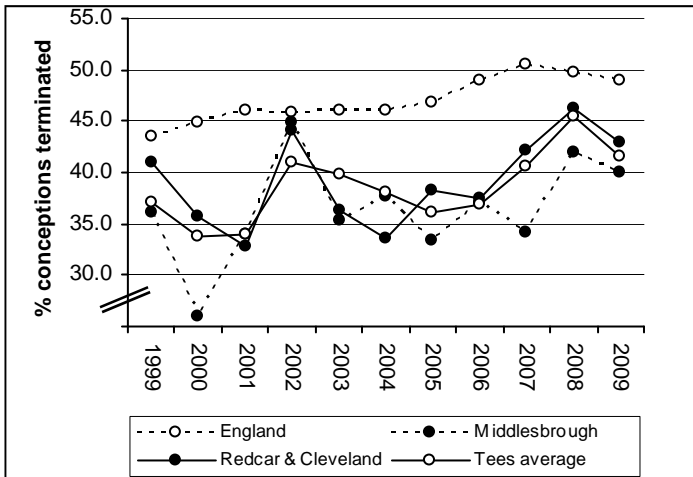


Source: LAD1, Office for National Statistics and Teenage Pregnancy Unit (Version: 11.03.11)

Year	Middlesbrough		England
	Number	Rate	Rate
1998	197	66.5	46.6
1999	211	70.4	44.8
2000	169	53.1	43.6
2001	180	54.2	42.5
2002	198	59.9	42.6
2003	190	57.9	42.1
2004	191	61.6	41.6
2005	177	57.5	41.3
2006	150	50.8	40.6
2007	196	66.7	41.8
2008	150	51.5	40.5
2009	174	60.4	38.2

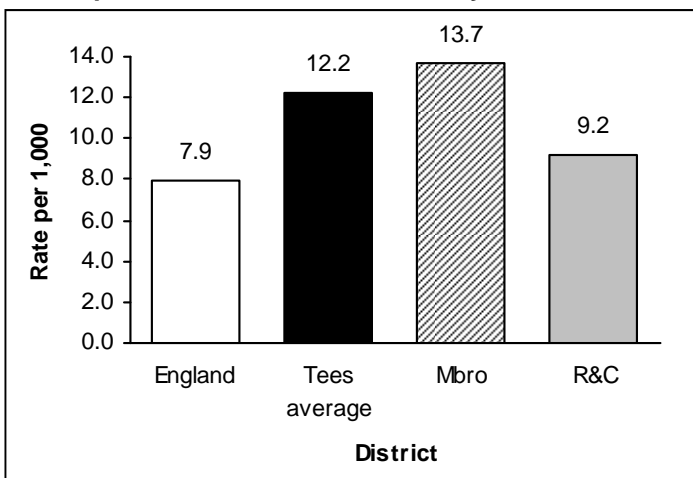
Year	Redcar & Cleveland		England
	Number	Rate	Rate
1998	162	58.3	46.6
1999	161	57.4	44.8
2000	162	57.0	43.6
2001	162	54.5	42.5
2002	143	48.2	42.6
2003	143	48.1	42.1
2004	173	58.3	41.6
2005	152	51.8	41.3
2006	139	48.3	40.6
2007	140	49.7	41.8
2008	132	47.7	40.5
2009	139	51.7	38.2

## Proportion of <18 conceptions leading to termination, 1999-2009



Source: LAD1, Office for National Statistics and Teenage Pregnancy Unit (Version: 11.03.11)

## Conception rates, females under 16 years, 2006-2008



Source: LAD1, Office for National Statistics and Teenage Pregnancy Unit (Version: 11.03.11)

- Under 18 conception rates for both districts are higher than the national average.
- 2009 saw a rise in under 18 conception rates in both districts. The England rate saw a slight fall.
- Termination rates of under 18 conceptions saw a fall in 2009 in both Middlesbrough and Redcar & Cleveland. Both districts are still below the national average, and the rates have fallen by more than the decline in the England rate in both districts.
- Throughout Teesside the under 16 conception rates are higher than those of England. Locally, Middlesbrough had the highest rate with 13.7 conceptions per 1,000 population. Redcar & Cleveland has the lowest rate in Tees with 9.2 conceptions per 1,000 population.





## Inequalities in risks to health

Indicator	Measure	Date/period	Hartlepool	Middlesbrough	Redcar & Cleveland	Stockton-on-Tees	Tees	England
<b>People</b>								
Number of live births	No	2009	1177	1981	1504	2443	7105	
General fertility rate per 1,000	Rate per 1,000		66.3	67.2	58.8	63.9	64.1	63.7
Population aged 0-19	No	2009	22,900	39,900	33,500	48,600	144,900	
	Rate (%)		25.2	28.4	24.3	25.4	24.9	23.9
Population aged 60 and over	No	2009	20,300	28,400	35,600	40,700	125,000	
	Rate (%)		22.4	20.2	25.9	21.3	22.3	22.4
Life expectancy at birth (years)	Males	2007-09	75.4	75.7	77.7	76.9	76.4	78.3
	F'male	2007-09	79.8	79.7	81.7	81.2	80.6	82.3
Healthy life expectancy at age 65 (number of extra years)	Males	2001	10.7	10.6	11.4	11.2	11.0	12.5
	F'male	2001	12.5	12.6	12.9	13.0	12.8	14.5
<b>Risks to health</b>								
Low birthweight, all births under 2500g	No	2009	84	163	111	177	535	
	Rate (%)		7.1	8.2	7.4	7.2	7.5	7.5
Under-18 conceptions	No	2009	106	174	139	164	583	
	Rate (%)		57.3	60.4	51.7	42.6	53.0	38.2
Under-16 conceptions	Rate (%)		13.0	13.7	9.2	12.9	12.2	7.9
<b>Death</b>								
Mortality from all causes, all ages standardised mortality ratio (SMR)	No	2007-09	2882	4221	4243	5192	16538	
	Ratio (SMR)		123	121	105	111		100
Mortality from all cancers	No	2007-09	908	1220	1276	1557	4961	
	Ratio (SMR)		135	126	111	117		100
Mortality from all circulatory diseases	No	2007-09	842	1268	1411	1571	5092	
	Ratio (SMR)		111	111	105	103		100
Mortality from all accidents	No	2007-09	55	76	92	97	320	
	Ratio (SMR)		101	90	102	87		100
Mortality from suicide and injury undetermined	No	2007-09	17	44	47	48	156	
	Ratio (SMR)		78	132	141	104		100
Mortality in Infancy	No	2007-09	18	32	14	26	90	
	Rate per 1,000		5.1	5.5	3.0	4.0		100

## Inequalities in outcomes

Number of deaths and standardised mortality ratios (SMR) for selected causes of death, males and females, Hartlepool and Stockton, 2007-2009

Cause of Death	ICD-10 code	Sex	Hartlepool			Stockton		
			Number	SMR	CI	Number	SMR	CI
All malignant neoplasms	C00-C97	M	479	<u>137</u>	125-150	829	<u>118</u>	110-126
		F	429	<u>134</u>	122-147	728	<u>115</u>	107-124
		P	908	<u>135</u>	127-145	1557	<u>117</u>	111-122
Lung cancer	C33-C34	M	134	<u>160</u>	134-189	216	<u>129</u>	112-147
		F	126	<u>196</u>	163-233	181	<u>143</u>	123-165
		P	260	<u>175</u>	155-198	397	<u>135</u>	122-149
Stomach cancer	C16	M	17	<u>124</u>	72-199	32	<u>117</u>	80-166
		F	7	<u>88</u>	35-181	27	<u>172</u>	113-250
		P	24	<u>111</u>	71-165	59	<u>137</u>	105-177
Colorectal cancer	C17-C21	M	40	<u>107</u>	76-146	82	<u>109</u>	87-136
		F	29	<u>91</u>	61-130	68	<u>108</u>	84-137
		P	69	<u>99</u>	77-126	150	<u>109</u>	92-127
Breast cancer	C50	F	52	<u>100</u>	75-131	106	<u>102</u>	83-123
Cervical cancer	C53	F	7	<u>174</u>	70-358	9	<u>110</u>	50-208
All circulatory disease	I00-I99	M	414	<u>110</u>	100-122	800	<u>106</u>	99-113
		F	428	<u>111</u>	100-122	771	<u>101</u>	94-109
		P	842	<u>111</u>	103-118	1571	<u>103</u>	98-109
Stroke	I60-I69	M	85	<u>106</u>	85-131	190	<u>117</u>	101-135
		F	138	<u>111</u>	93-131	267	<u>109</u>	96-122
		P	223	<u>109</u>	95-124	457	<u>112</u>	102-123
Accidents	V01-X59	M	33	<u>107</u>	74-150	53	<u>82</u>	61-107
		F	22	<u>94</u>	59-142	44	<u>93</u>	68-125
		P	55	<u>101</u>	76-132	97	<u>87</u>	70-106
Land transport accidents	V01-V89	M	4	<u>44</u>	12-114	18	<u>94</u>	56-148
		F	4	<u>132</u>	36-337	9	<u>145</u>	66-275
		P	8	<u>66</u>	29-131	27	<u>106</u>	70-155
Suicide & injury undetermined	X60-X84	M	13	<u>79</u>	42-136	36	<u>103</u>	72-143
	Y10-Y34	F	4	<u>75</u>	20-191	12	<u>107</u>	55-187
	exc. Y33.9	P	17	<u>78</u>	46-125	48	<u>104</u>	77-138
All causes	A00-Y99	M	1427	<u>126</u>	119-133	2571	<u>112</u>	108-116
		F	1455	<u>121</u>	115-127	2621	<u>110</u>	106-114
		P	2882	<u>123</u>	119-128	5192	<u>111</u>	108-114

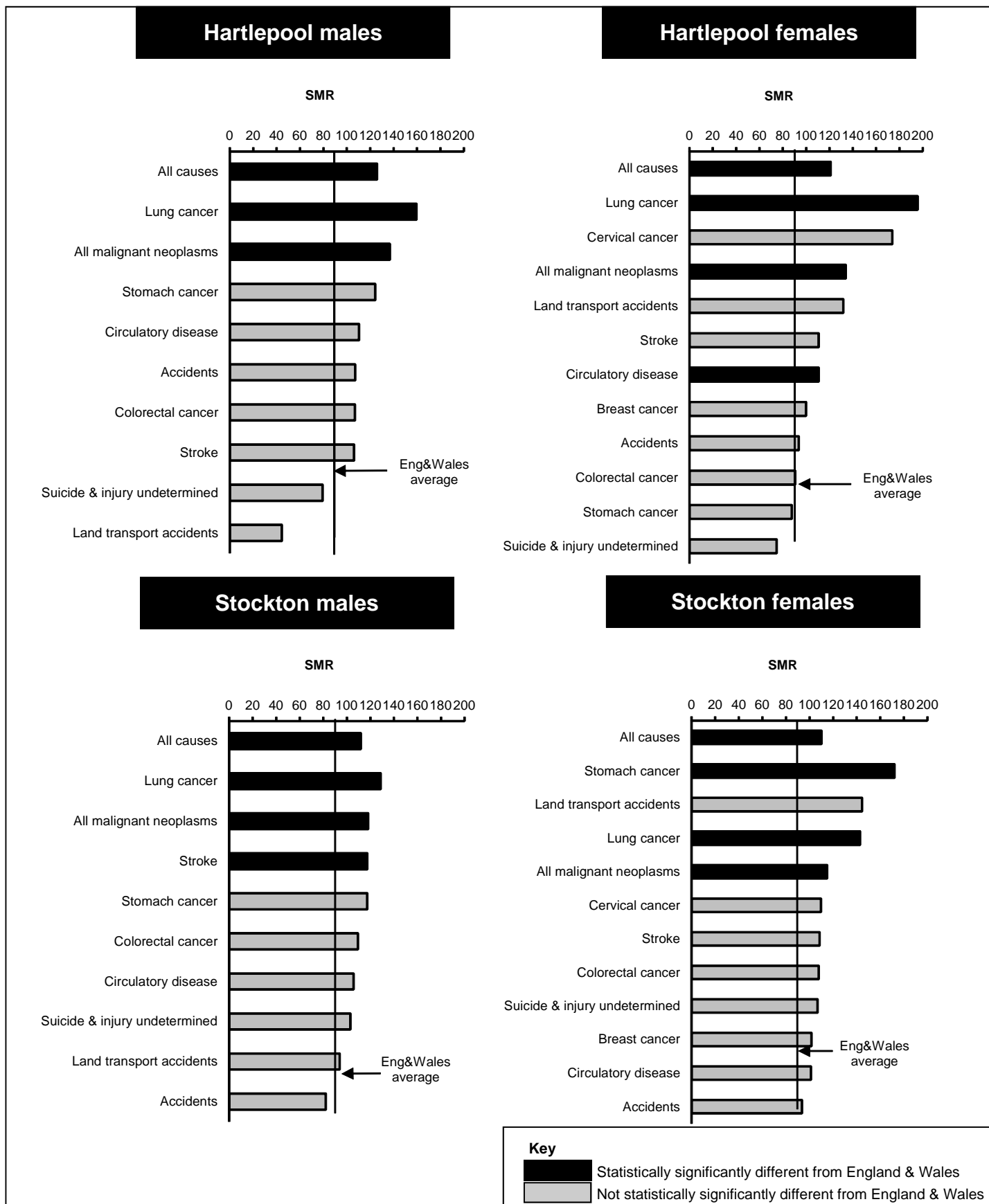
Source: National Statistics (The Information Centre for health and social care)

**Note:**

SMR = standardised mortality ratio, Number = observed deaths, CI = 95% confidence intervals  
SMRs that have been underlined are statistically significantly different from England & Wales

## Inequalities in outcomes

Standardised mortality ratios (SMR) for selected causes of death showing statistically significant differences from England & Wales, males and females, Hartlepool and Stockton, 2007-2009



Source: Office for National Statistics

## Inequalities in outcomes

Number of deaths and standardised mortality ratios (SMR) for selected causes of death, males and females, Middlesbrough and Redcar & Cleveland, 2007-2009

Cause of Death	ICD-10 code	Sex	Middlesbrough			Redcar & Cleveland		
			Number	SMR	CI	Number	SMR	CI
All malignant neoplasms	C00-C97	M	636	<u>126</u>	116-136	686	<u>114</u>	106-123
		F	584	<u>126</u>	116-137	590	<u>108</u>	100-117
		P	1220	<u>126</u>	119-134	1276	<u>111</u>	105-118
Lung cancer	C33-C34	M	196	<u>163</u>	141-188	203	<u>140</u>	122-161
		F	164	<u>179</u>	153-209	142	<u>130</u>	110-154
		P	360	<u>170</u>	153-189	345	<u>136</u>	122-151
Stomach cancer	C16	M	32	<u>162</u>	111-229	35	<u>149</u>	104-208
		F	14	<u>120</u>	66-201	15	<u>110</u>	61-181
		P	46	<u>146</u>	107-195	50	<u>135</u>	100-178
Colorectal cancer	C17-C21	M	71	<u>132</u>	103-166	78	<u>121</u>	96-151
		F	43	<u>92</u>	67-124	61	<u>111</u>	85-142
		P	114	<u>113</u>	94-136	139	<u>116</u>	98-137
Breast cancer	C50	F	81	<u>108</u>	86-134	93	<u>106</u>	85-130
Cervical cancer	C53	F	7	<u>120</u>	48-248	12	<u>182</u>	94-318
All circulatory disease	I00-I99	M	604	<u>110</u>	101-119	663	<u>102</u>	95-110
		F	664	<u>113</u>	105-122	748	<u>108</u>	101-116
		P	1268	<u>111</u>	105-118	1411	<u>105</u>	100-111
Stroke	I60-I69	M	138	<u>115</u>	97-136	158	<u>113</u>	96-132
		F	211	<u>111</u>	96-126	266	<u>119</u>	105-134
		P	349	<u>112</u>	101-125	424	<u>117</u>	106-128
Accidents	V01-X59	M	50	<u>104</u>	77-137	51	<u>104</u>	77-136
		F	26	<u>72</u>	47-106	41	<u>100</u>	72-136
		P	76	<u>90</u>	71-113	92	<u>102</u>	82-125
Land transport accidents	V01-V89	M	7	<u>47</u>	19-97	16	<u>117</u>	67-190
		F	6	<u>127</u>	46-276	5	<u>105</u>	34-245
		P	13	<u>66</u>	35-113	21	<u>114</u>	71-174
Suicide & injury undetermined	X60-X84 Y10-Y34 exc. Y33.9	M	35	<u>138</u>	96-191	38	<u>153</u>	108-209
		F	9	<u>112</u>	51-213	9	<u>108</u>	49-205
		P	44	<u>132</u>	96-177	47	<u>141</u>	104-188
All causes	A00-Y99	M	1987	<u>119</u>	114-124	2040	<u>105</u>	100-110
		F	2234	<u>124</u>	119-129	2203	<u>104</u>	100-109
		P	4221	<u>121</u>	118-125	4243	<u>105</u>	101-108

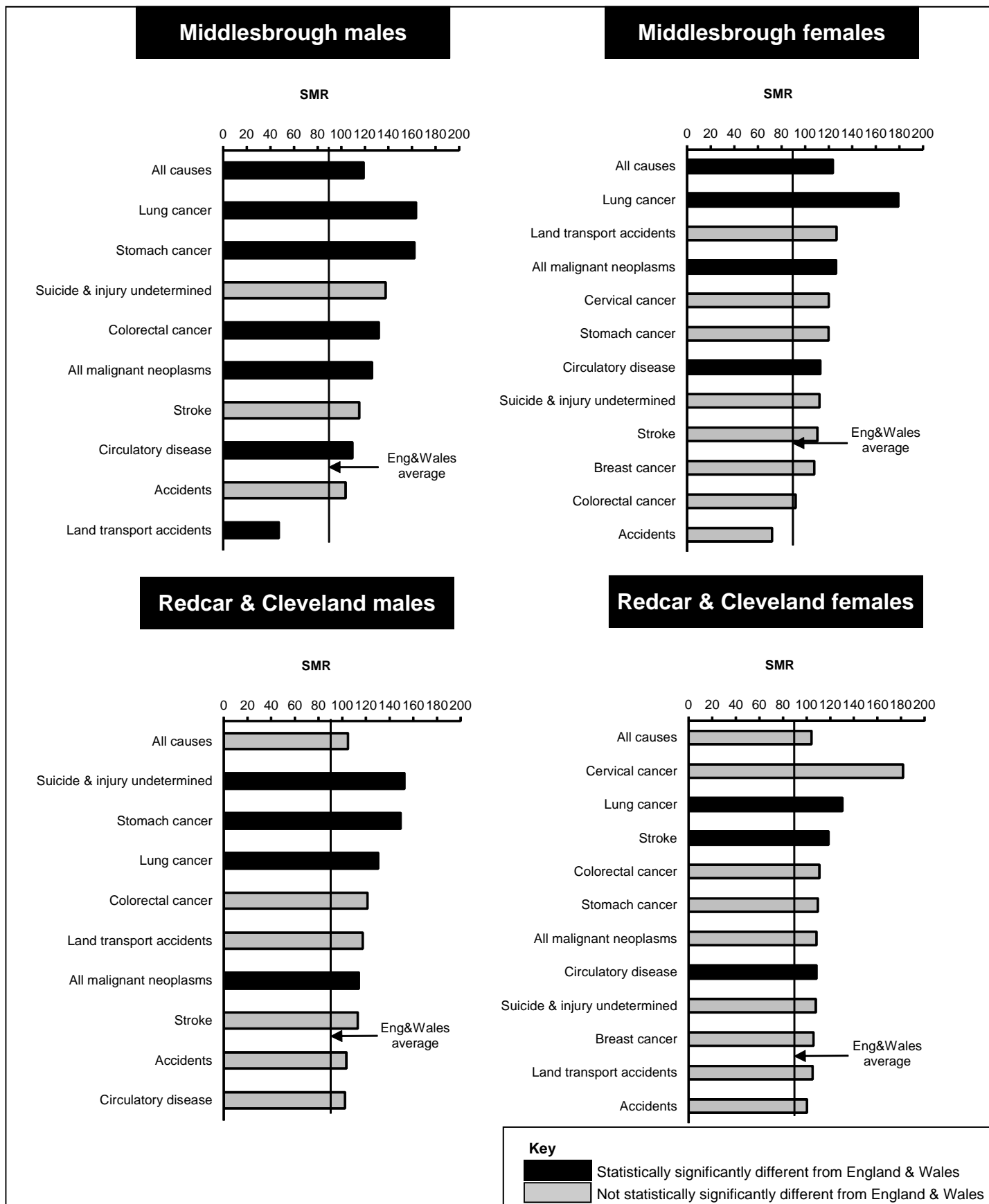
Source: National Statistics (The Information Centre for health and social care)

Note:

SMR = standardised mortality ratio, Number = observed deaths, CI = 95% confidence intervals  
SMRs that have been underlined are statistically significantly different from England & Wales

## Inequalities in outcomes

Standardised mortality ratios (SMR) for selected causes of death showing statistically significant differences from England & Wales, males and females, Middlesbrough and Redcar & Cleveland, 2007-2009



Source: Office for National Statistics

# Inequalities in outcomes

## Mortality in infancy (2009) and childhood (2007-2009), Hartlepool and Stockton

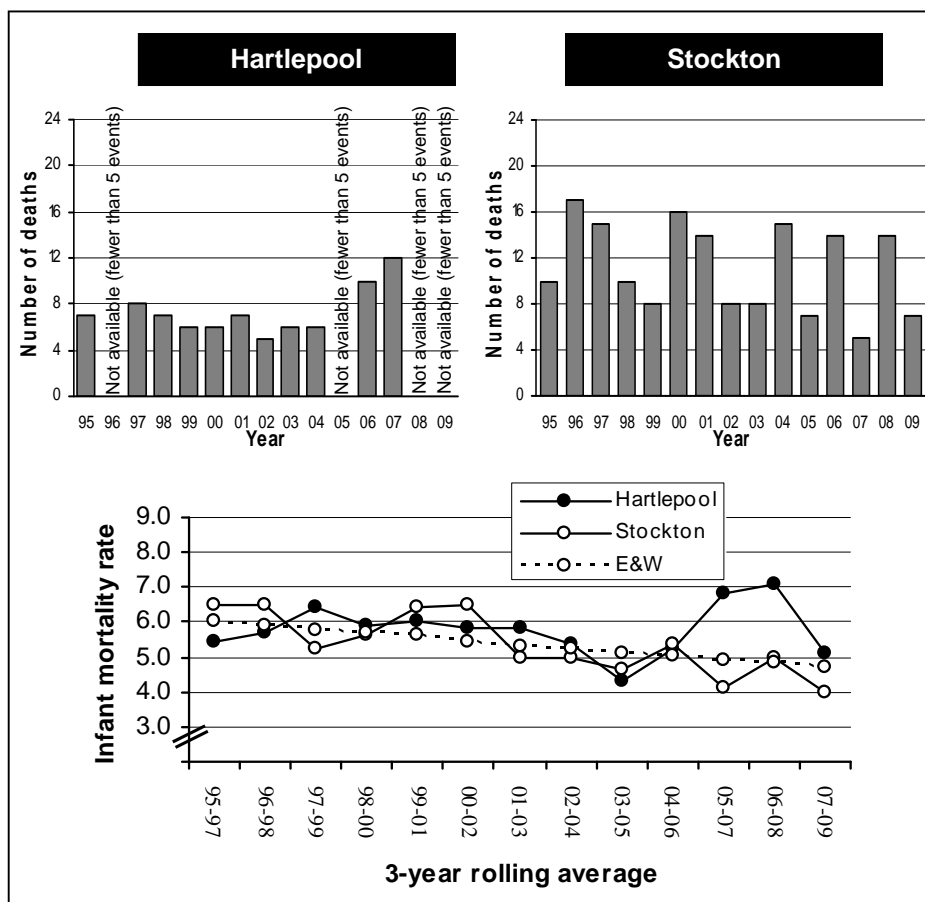
Age group	Hartlepool		Stockton		Tees		Eng & Wales	
	No.	Rate	No.	Rate	No.	Av rate	No.	Rate
*Perinatal (<7 days & stillbirths)	11	9.3	23	9.3	58	8.0	5369	7.6
**Neonatal (<28 days)	n/a	n/a	6	2.5	19	2.5	2233	3.2
**Postneonatal (28 days - 1 yr)	n/a	n/a	n/a	n/a	8	1.2	1043	1.5
**Infant (<1 year)	n/a	n/a	7	2.9	27	3.7	3276	4.6
***Childhood								
1-4 years	5	37.2	n/a	n/a	15	20.5	1574	20.2
5-14 years	5	14.7	7	10.1	25	12.8	1972	10.5

- Mortality rates for children in their first week of life are above the national average in both Hartlepool and Stockton.
- Mortality rates for children aged 28 days to 1 year are below the national average in both Hartlepool and Stockton.
- The death rate in Hartlepool is higher than the national average for children aged 1-4 years.
- Stockton has lower mortality amongst the 5-14 age-group than nationally.

\* **Perinatal death rate:** number of deaths per 1,000 births  
 \*\* **Neonatal, postnatal and infant death rate:** number of deaths per 1,000 live births  
 \*\*\* **Childhood death rate:** number of deaths per 100,000 resident children in age-band  
 n/a—not available (fewer than 5 events)

## Number of infant deaths and infant death rates per 1,000 live births, Hartlepool and Stockton 1995-2009

- Infant deaths in Hartlepool have remained at the 2008 level.
- Stockton infant deaths in 2009 have decreased by half from 2008, and is now at a similar level to 2007. There appears to be a lot of fluctuation year on year in Stockton.



Source: Office for National Statistics, VS1

## Inequalities in outcomes

### Mortality in infancy (2009) and childhood (2007-2009), Middlesbrough and Redcar & Cleveland

Age group	Middlesbrough		Redcar & Cleveland		Tees		Eng & Wales	
	No.	Rate	No.	Rate	No.	Av rate	No.	Rate
*Perinatal (<7 days & stillbirths)	15	7.5	9	6.0	58	8.0	5369	7.6
**Neonatal (<28 days)	10	5.0	n/a	n/a	19	2.5	2233	3.2
**Postneonatal (28 days - 1 yr)	n/a	n/a	n/a	n/a	8	1.2	1043	1.5
**Infant (<1 year)	12	6.1	5	3.3	27	3.7	3276	4.6
***Childhood								
1-4 years	5	23.0	n/a	n/a	15	20.5	1574	20.2
5-14 years	9	18.0	n/a	n/a	25	12.8	1972	10.5

- Redcar & Cleveland's infant and child mortality rates are lower than those for England & Wales at every age.
- Mortality rates for children in their 28 days of life are below the national average in Redcar & Cleveland.
- Mortality rates for children aged 28 days to 1 year are below the national average in Middlesbrough.

\* **Perinatal death rate:** number of deaths per 1,000 births

\*\* **Neonatal, postnatal and infant death rate:** number of deaths per 1,000 live births

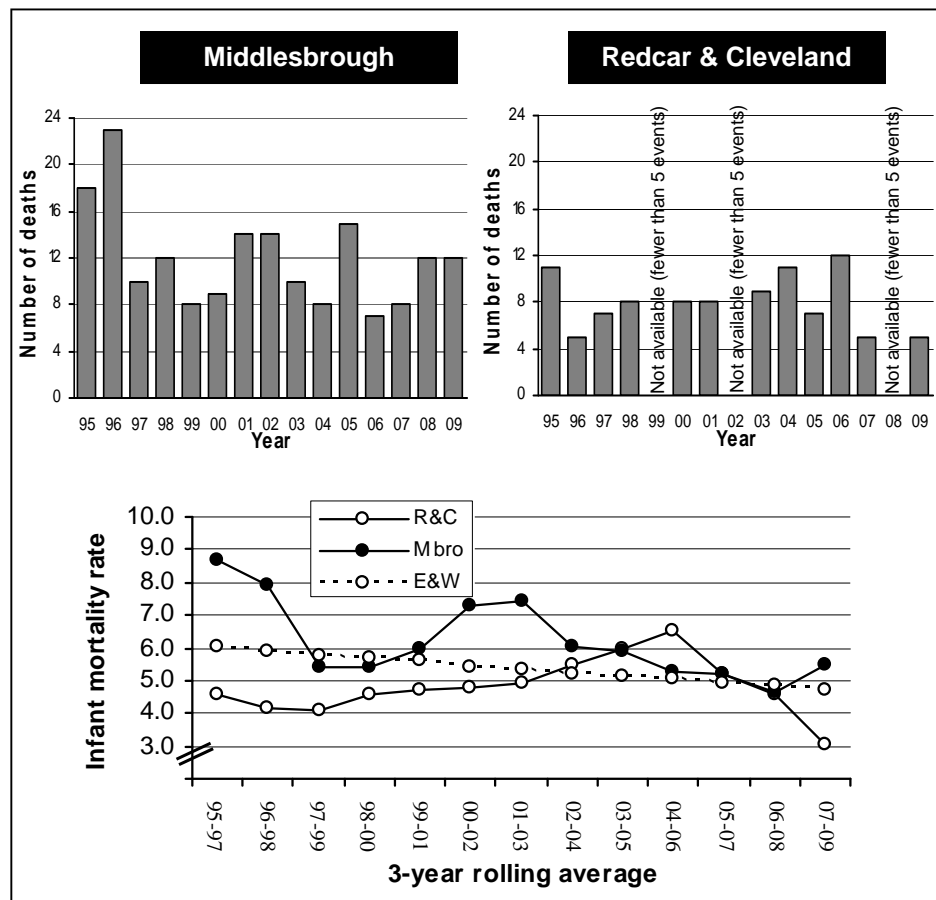
\*\*\* **Childhood death rate:** number of deaths per 100,000 resident children in age-band

n/a—not available (fewer than 5 events)

### Number of infant deaths and infant death rates per 1,000 live births, Middlesbrough and Redcar & Cleveland 1995-2009

- In 2009, infant deaths in Middlesbrough remained at the 2008 level.
- In 2009, infant deaths in Redcar & Cleveland increased to the 2007 level.

- Three year rolling averages reveal that infant mortality rate in Middlesbrough has risen to above the national average.
- Infant mortality rate in Redcar & Cleveland has fallen to well below the national average.



Source: Office for National Statistics, VS1